

Seeeduino Nano

102010268

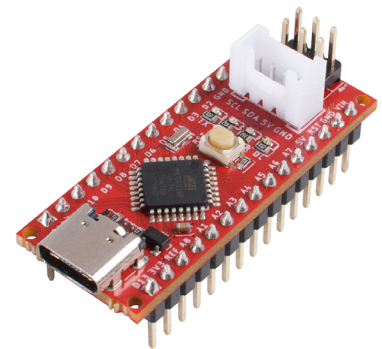
Product Overview

08-17-2022

For the most up-to-date information, visit www.mouser.com or the supplier's website.

Description

Seeed Studio Seeeduino Nano is a compact board similar to the Seeeduino V4.2/Arduino UNO and is compatible with Arduino Nano on pinout and sizes. This Seeeduino Nano is built around the Atmega328P 8-bit AVR microcontroller like the Seeeduino V4.2 and the same program can be used on both boards. The Seeeduino Nano features an onboard grove I²C connector, USB type C, which is symmetrical and reversible. Seeeduino Nano is more suitable for space-constrained scenes.



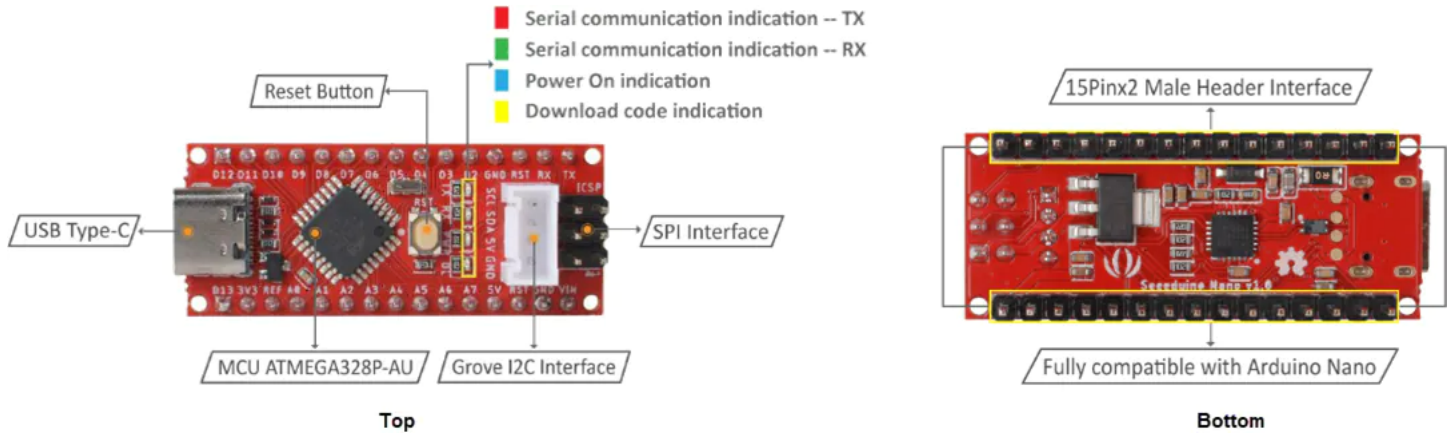
Features

- 43mm x 18mm board dimensions
- 16M ATmega328P
- Fully compatible with Arduino Nano
- USB Type C for programming and power
- On-board grove I²C connector
- Breadboard-friendly

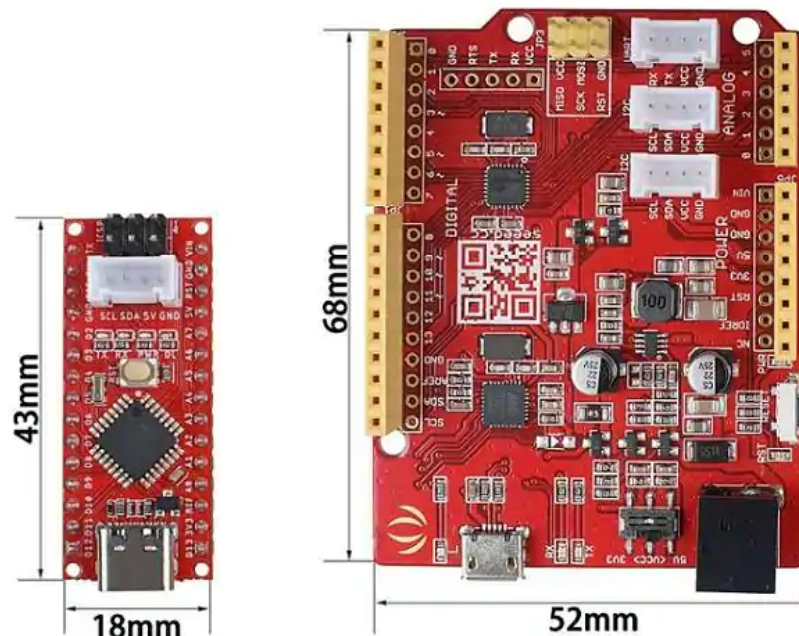
Seeeduino Nano Vs. Seeeduino V4.2 Vs. Arduino

Model	Processor	Input Voltage	IO Voltage	Analog In/Out	Digital IO/PWM	USB	Grove Connector
Seeeduino V4.2	ATmega328P	5V/7V-12V	3.3V/5V	6/0	14/6	Micro-USB	2 x I ² C + 1 x UART
I ² C Seeeduino Nano	ATmega328P	5V/7V-12V	5V	8/0	14/6	Type C	1 x I ² C
Arduino Nano	ATmega328P	5V/7V-12V	5V	8/0	14/6	Mini USB	

Board Layout Of Seeeduino Nano



Seeeduino Nano Vs. Seeeduino V4.2



Mouser Part Number

[View Part](#)

To learn more, visit <https://www.mouser.com/new/seeed-studio/seeed-seeeduino-nano/>